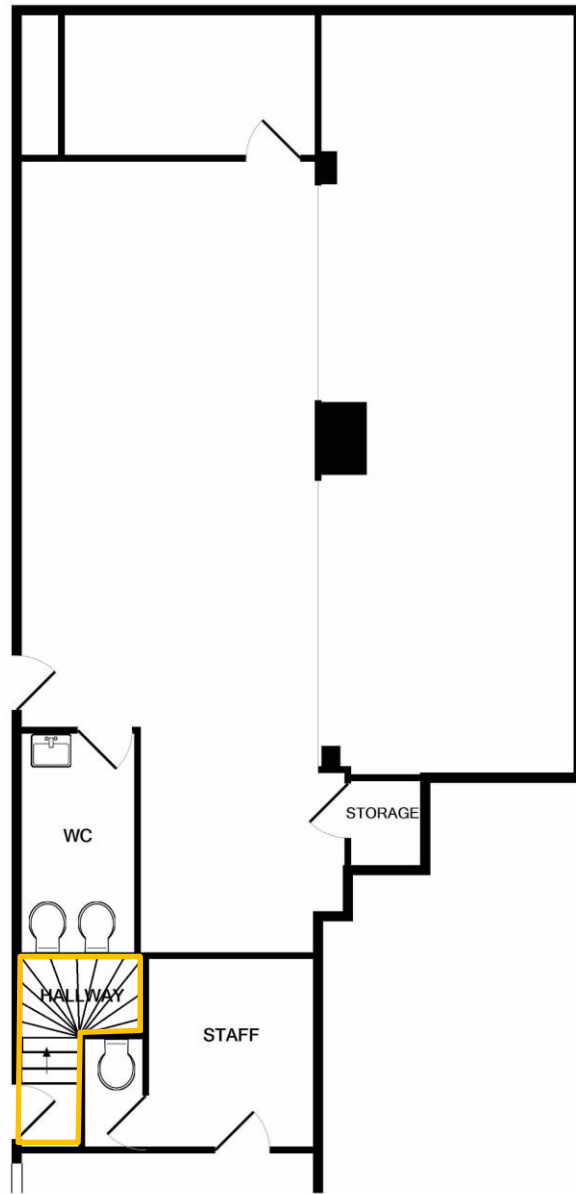
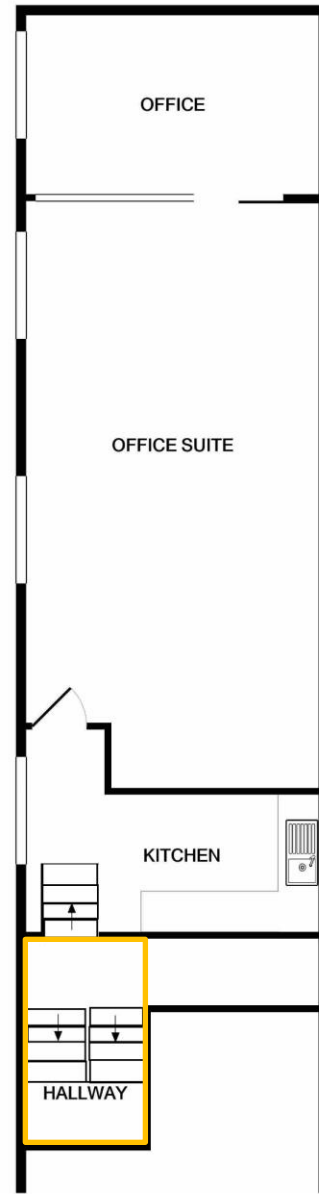


Ground Floor

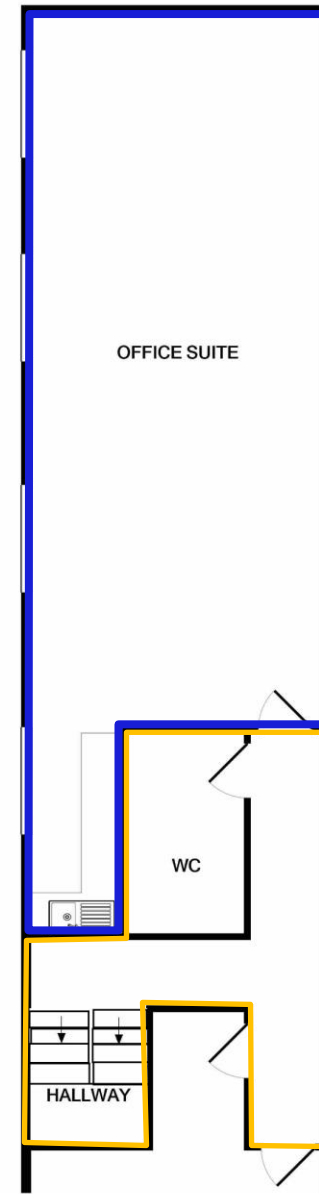


Exit to Retford Street

First Floor



Second Floor



### Lease Plan

Ground floor Entrance, Access &  
Second Floor Offices Only  
of 93 Kingsland Road  
London  
E2 8AG

## 1<sup>st</sup> Class Energy Ltd



**1st Class Energy Ltd**

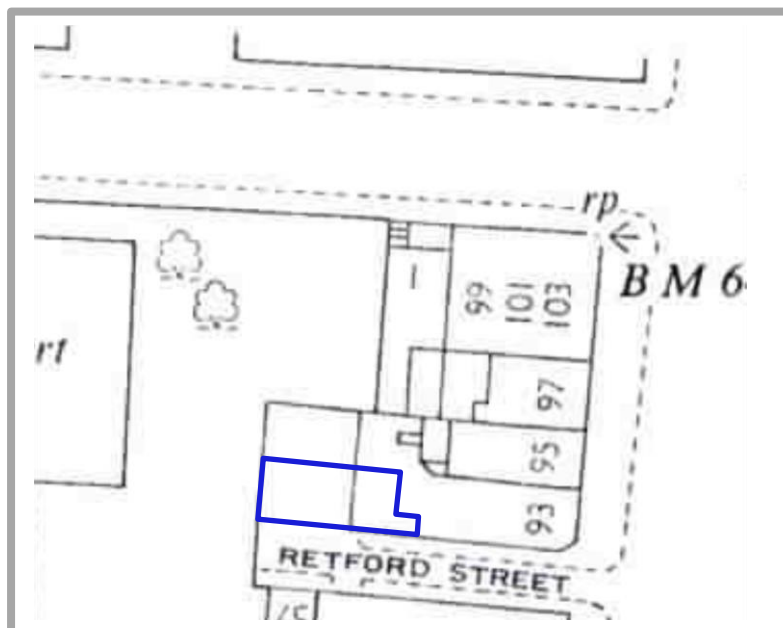
28 Lords Meadow  
Redbourn  
Herts  
AL3 7BX

Drawn: Glen Baynes  
T: 01582 793525

[info@1stclassenergy.com](mailto:info@1stclassenergy.com)  
[www.1stclassenergy.com](http://www.1stclassenergy.com)

© 1st Class Energy Ltd

### Location Plan: Scale 1:1250



Scale



SITE Plan Scale 1:200 when printed at A3. Check printer parameters

### Legend

- Red edged outline of Building and Land of Property 93 Kingsland Road Title Number 41765
- Blue Edged outline of Demised Leased Premises within Second Floor Offices
- Shared or Communal Space