



Flat 4 St. Mary's Court, 3 Defoe Road

Stoke Newington, London, N16 0EP

Modern Two Bedroom Maisonette Situated within a Church Hall conversion.

2 Beds

- Gas Central Heating
- 2 Bedrooms
- Situated in close proximity to Stoke Newington High Street
- Newly Refurbished Throughout
- Outdoor Space
- Parking Permit

Flat 4 St. Mary's Court, 3 Defoe Road, Stoke Newington, London, N16 0EP

Summary

Available Size	2 Beds
Rent	£3,000.00 per month
Business Rates	N/A
Service Charge	N/A
Car Parking	N/A
Estate Charge	N/A
EPC Rating	C

Description

Situated just off Stoke Newington Church Street, this exquisite two-bedroom Church Hall conversion is split over the lower and ground floors, offering approximately 85 sqm of internal space. The property features a spacious master bedroom with plenty of storage, a substantial second bedroom currently utilised as an office and a well-appointed bathroom suite. On the lower ground floor, you'll find a generously sized reception area that flows seamlessly into the well-equipped kitchen. Glass doors lead to the outdoor patio, seamlessly extending the living space. For added convenience, there's a guest WC facility tucked away nearby.

Location

Defoe Road, located just off Stoke Newington Church Street, is a stone's throw from boutique shops, restaurants, coffee houses, and pubs. A wealth of local amenities, including a fishmonger, butcher, library, post office, bakery, wine shop, optician, dentist, and pharmacy, are conveniently close. Moreover, a variety of local shops are readily accessible. Just a short walk away lies Clissold Park, boasting a playground, tennis courts, a paddling pool, a skate park, and animal enclosures.

Viewings

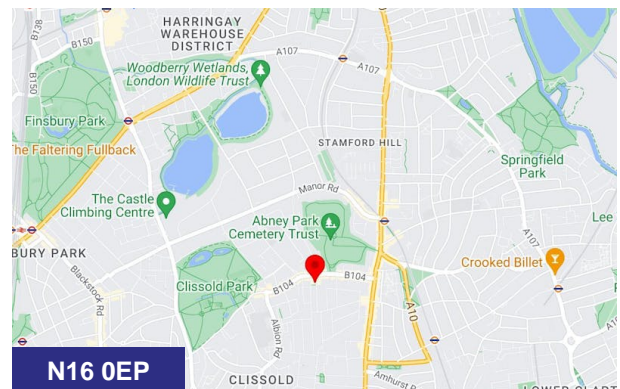
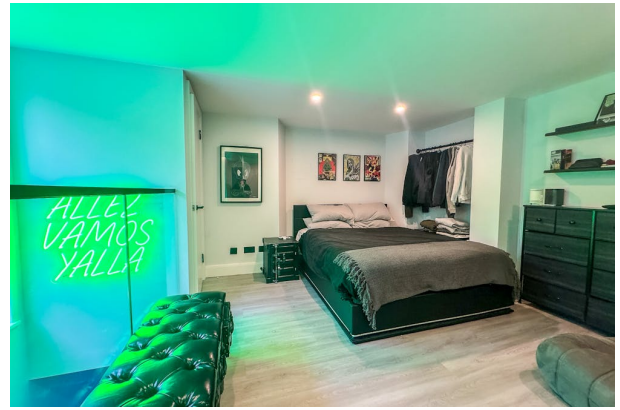
Strictly by appointment only.

Terms

Standard A.S.T Contract - 12 months

Availability

Available from May 2024.



Viewing & Further Information

Arthur Nowicki

0207 377 8989 | 07792711461

arthur@tarn-tarn.co.uk

Gasper Koscik

0207 456 9691 | 07554640000

Gasper@tarn-tarn.co.uk