

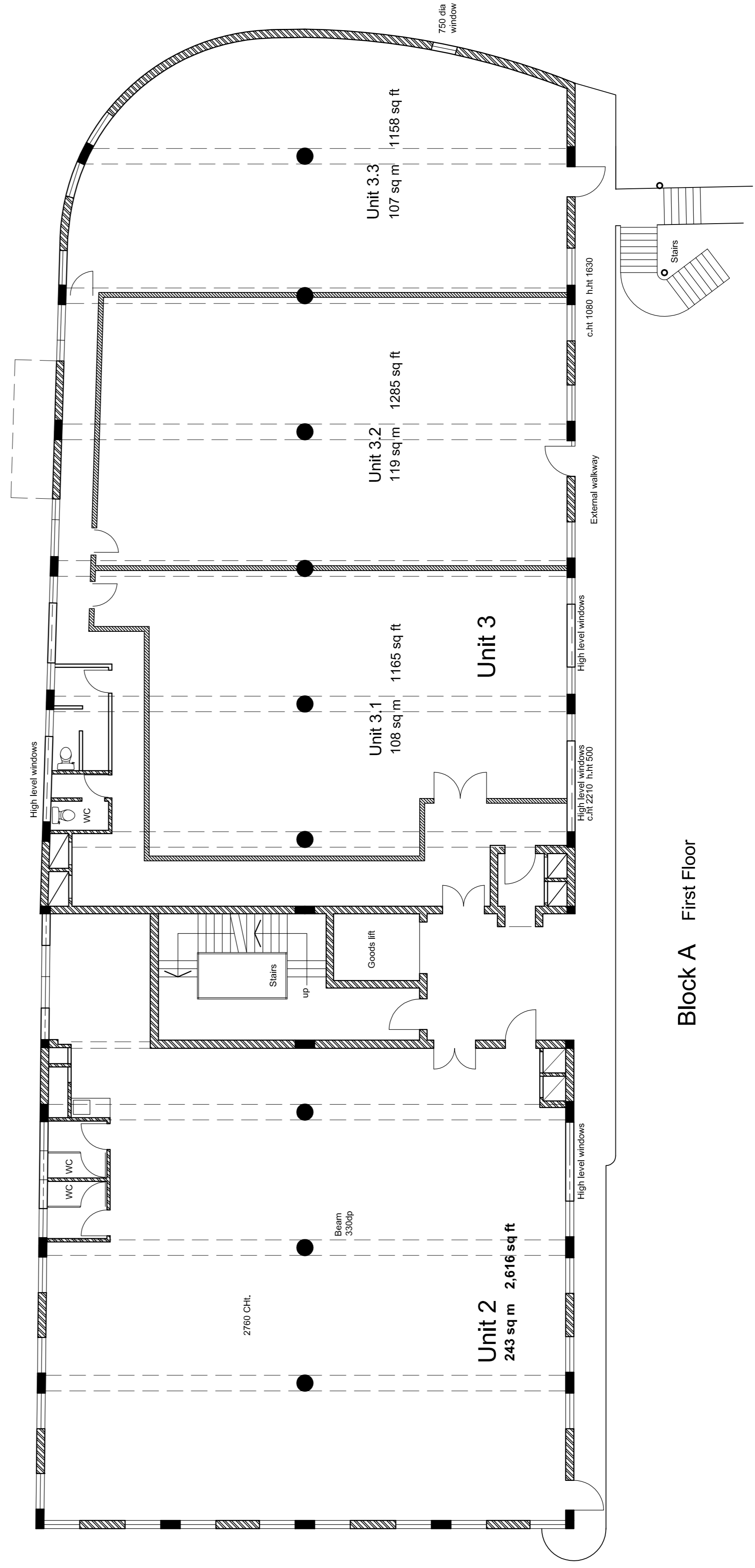
**Unit 4**  
Schedule of Accommodation  
Net Lettable area (incl. Toilets, excl. ducts)

Total	243 sq m	2,615 sq ft
-------	----------	-------------

**Unit 5**  
Schedule of Accommodation  
Net Lettable area

Unit 5.1	88 sq m	950 sq ft
Unit 5.2	67 sq m	720 sq ft
Unit 5.3	40 sq m	435 sq ft
Unit 5.4	33 sq m	355 sq ft
Unit 5.5	46 sq m	495 sq ft
Unit 5.6	29 sq m	305 sq ft
<b>Total</b>	<b>303 sq m</b>	<b>3,300 sq ft</b>

Block A Second Floor



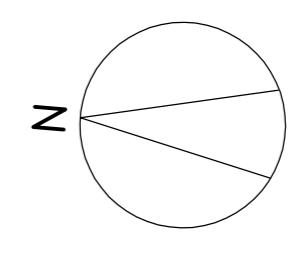
**Unit 2**  
Schedule of Accommodation  
Net Lettable area (incl. Toilets, excl. ducts)

Total	243 sq m	2,616 sq ft
-------	----------	-------------

**Unit 3**  
Schedule of Accommodation  
Net Lettable area

Unit 3.1	108 sq m	1165 sq ft
Unit 3.2	119 sq m	1285 sq ft
Unit 3.3	107 sq m	1158 sq ft
<b>Total</b>	<b>334 sq m</b>	<b>3,608 sq ft</b>

Block A First Floor



B	Oct07	Further surveyed
A	23Aug07	Drawing upgraded following recent survey.
Revisions		
Bayford Business Centre Bayford Street, London E8 for City Properties Management Ltd		
Subdivision of Units		
First & Second Floor Plans Block A		
Suite 4, 118 East Borneo Rd Singapore 439519 020 8447 0727		
Scale	1:100	MARCH 2005
Drawing no	<b>447-12 B</b>	