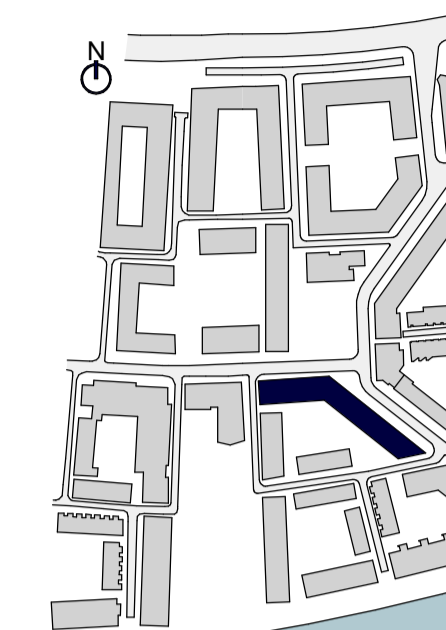
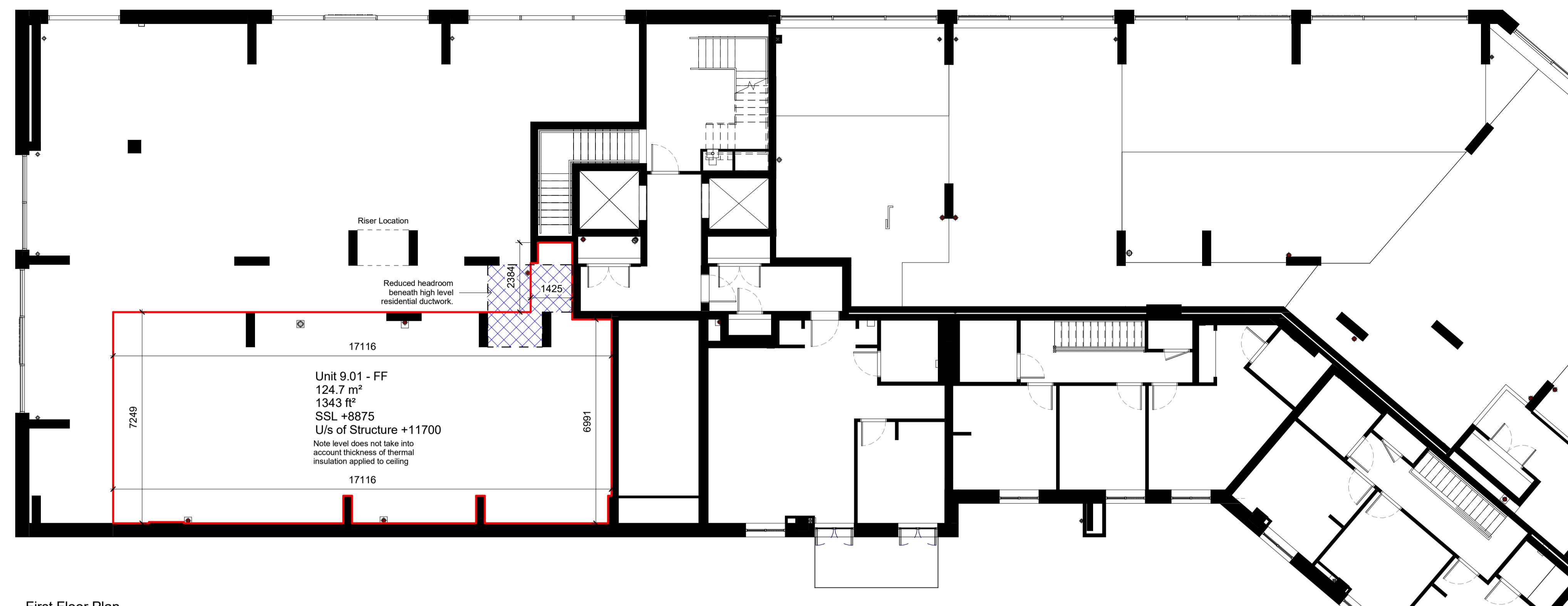


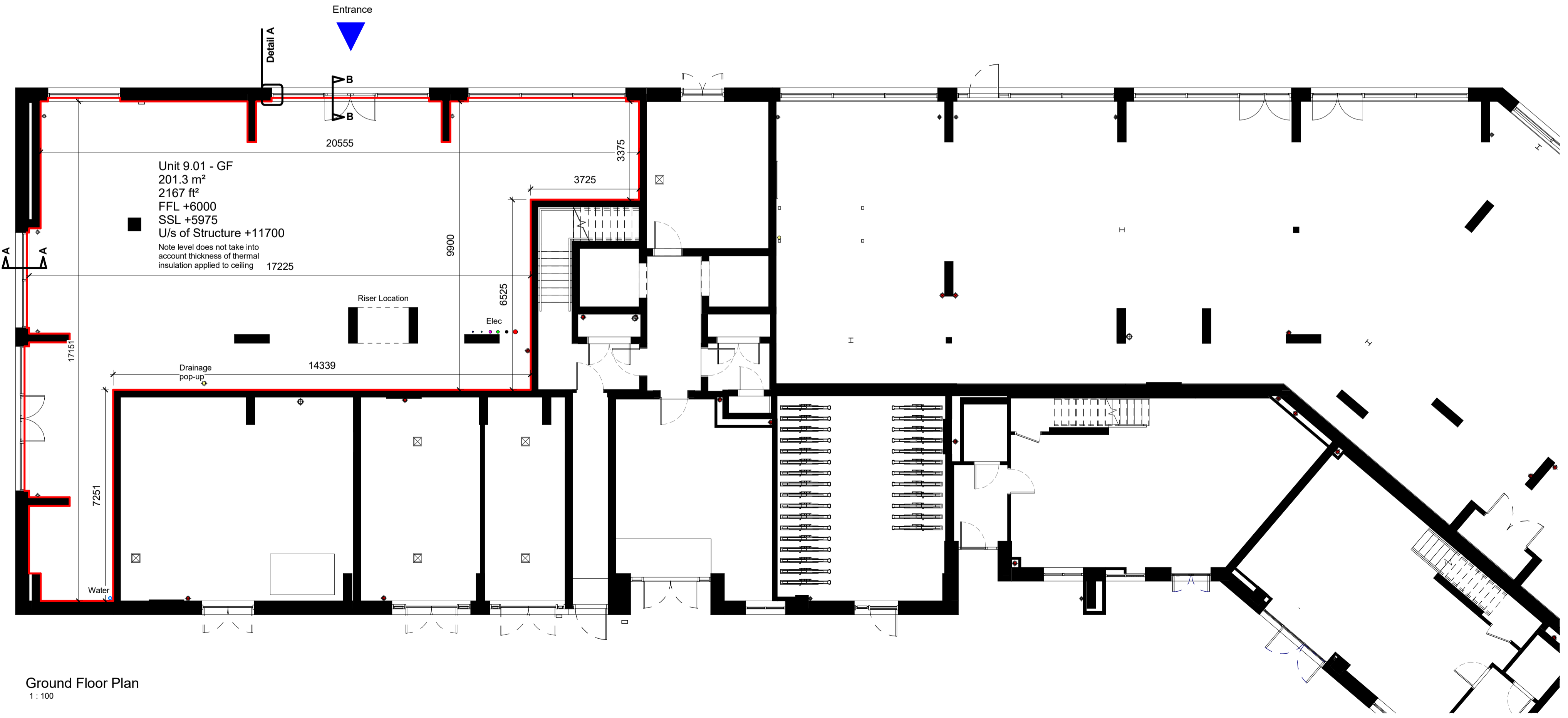
This drawing is copyright and shall not be reproduced or used for any other purpose without the written permission of the architects.
 This drawing must be read in conjunction with all other related drawings and documentation.
 It is the contractor's responsibility to ensure full compliance with the Building Regulations.
 Do not scale from this drawing, use figured dimensions only.
 It is the contractor's responsibility to check and verify all dimensions on site.
 Any discrepancies to be reported immediately.
 IF IN DOUBT ASK.
 Materials not in conformity with relevant British or European Standards/Codes of practice or materials known to be deleterious to health & safety must not be used or specified on this project.
 Materials known to contain asbestos contaminated materials (ACM's) in the manufacture or installation process have not been specified and must not be used on this project.



Block Location Plan



First Floor Plan
 1:100



Ground Floor Plan
 1:100

- Key**
- 150mm LV duct
 - 96mm Virgin Media duct
 - 90mm BT duct
 - 50mm FA duct
 - 96mm HYP duct
 - 50mm Spare duct
 - 110/150mm SVP from above to drain
 - 110mm Stub Stack
 - 110mm Drainage pop up
 - 75/150mm RWP from above to drain
 - Heating Pipework
 - Direct Heating Pipework (if energy center used)
 - Electricity (Low Voltage Safety)
 - Electricity (High Voltage)
 - Electricity (High Voltage Export)
 - 50mm CCTV duct
 - Water Pipework
 - Gas Pipework

No	Date	Description	By	Ckd
C	22/11/16	Drawing revised for inclusion in tenant pack	IW	MD
B	19/09/16	Update for inclusion in tenant pack	JE	MD
A	09/05/16	Notes regarding satellite dish and delivery lay-by omitted.	GT	MD



PROJECT
 Royal Wharf,
 Development Phase 2

TITLE
 Plot 09.01 - Commercial Unit 9.01
 Plan

DRAWING STATUS
 Information

DRAWN	DB	CHECKED	MD
SCALE	As indicated @ A1		
DATE	February 2016		

wcec architects
 4th Floor, South Building, Staple Inn Buildings,
 High Holborn, London, WC1V 7PZ
 Carnwood Court, Carnwood Road,
 Sheepbridge, Chesterfield, S41 9QB

JOB NO.	DRAWING NO.	REV
14-019	A_00_09.01_300	C

t: 020 3388 0019, e: email@wcec.co.uk, www.wcec.co.uk