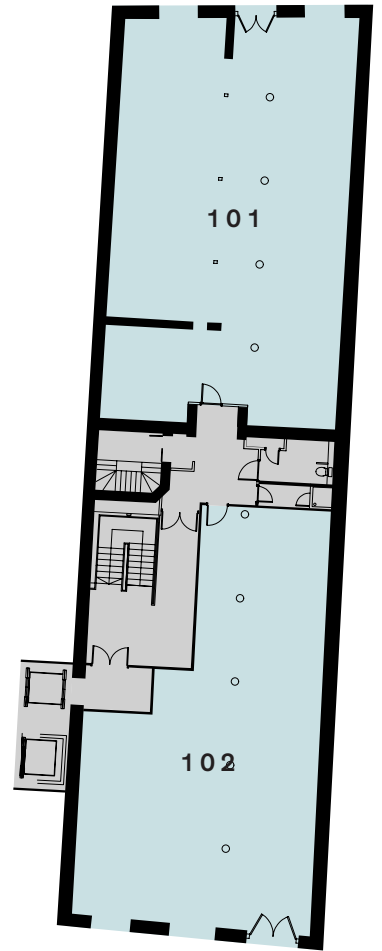


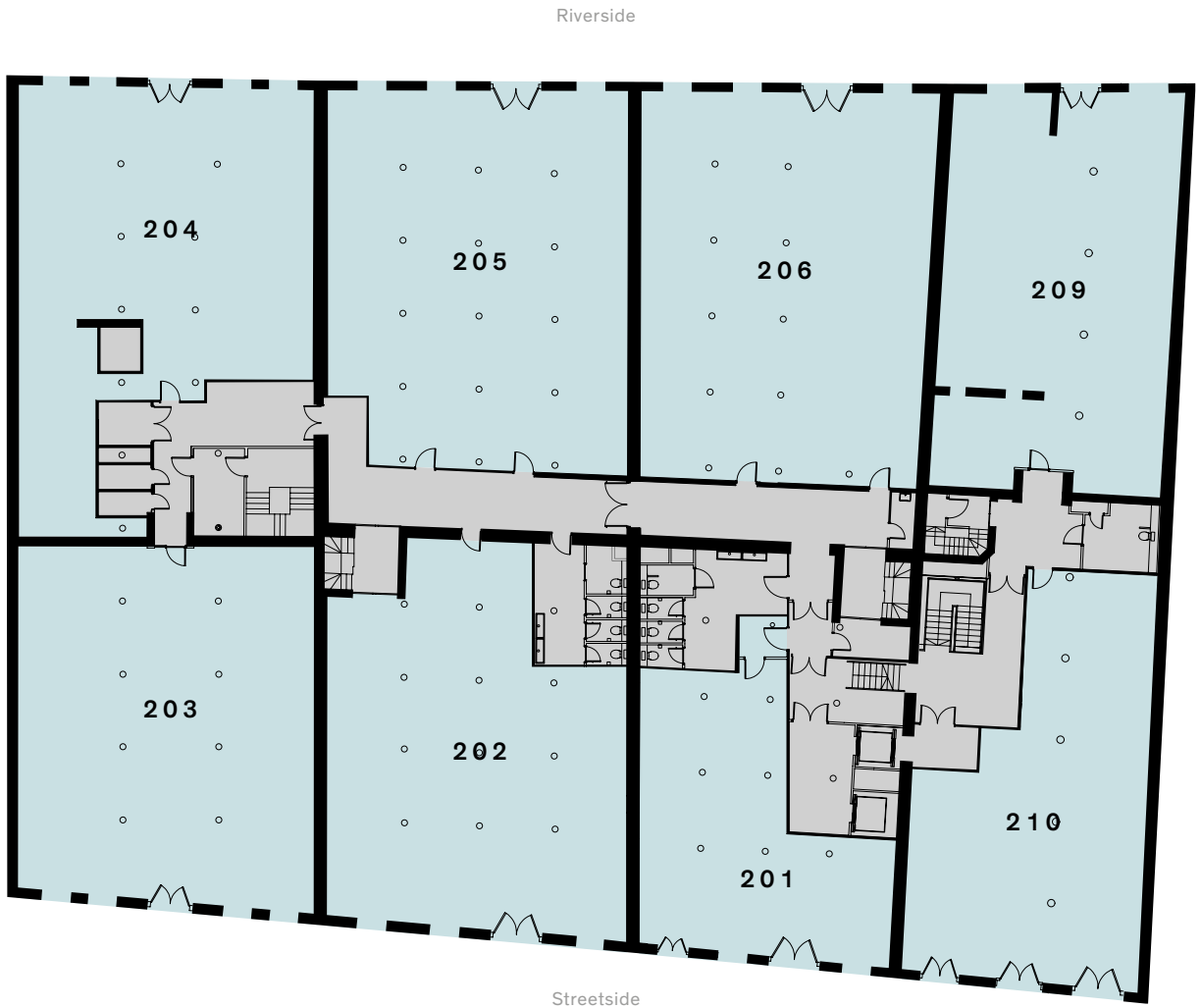
Riverside



Streetside

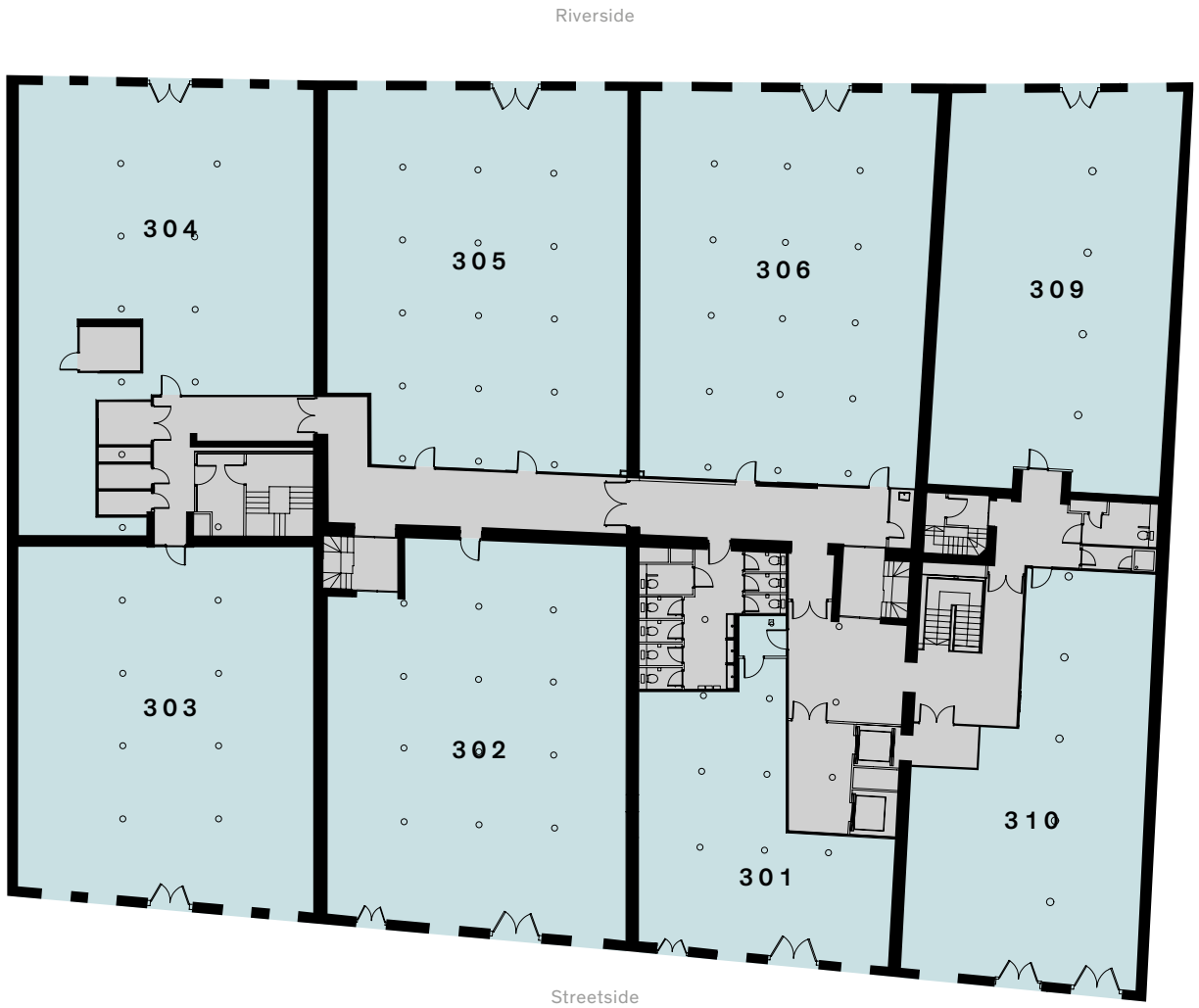
| | | |
|----------|-----------------------|-----------------------|
| Unit 101 | 2,171 FT ² | 201.70 M ² |
| Unit 102 | 1,832 FT ² | 170.20 M ² |





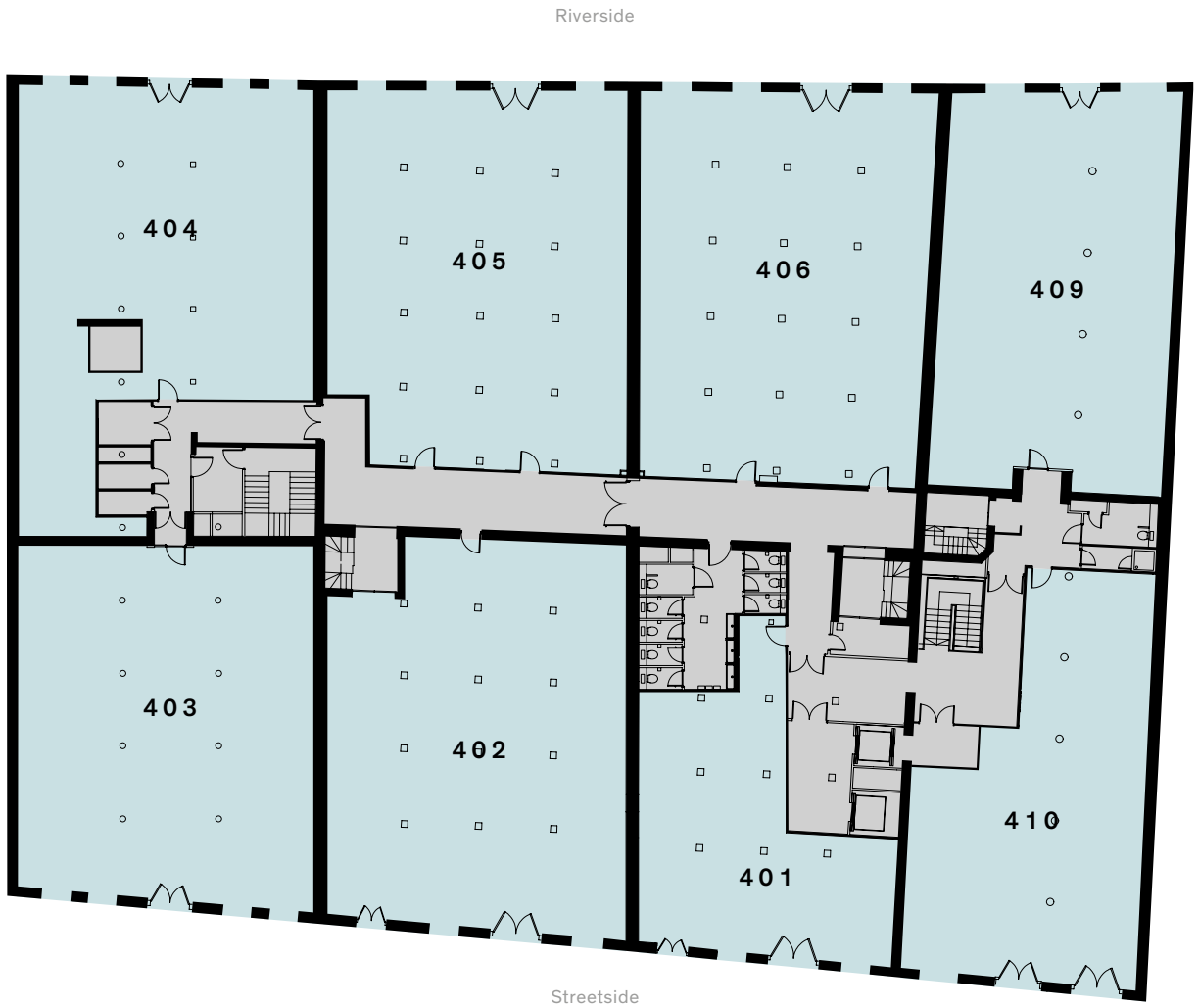
| | | |
|----------|-----------------------|-----------------------|
| Unit 201 | 1,393 FT ² | 129.40 M ² |
| Unit 202 | 2,462 FT ² | 228.70 M ² |
| Unit 203 | 2,465 FT ² | 229.00 M ² |
| Unit 204 | 2,316 FT ² | 215.20 M ² |
| Unit 205 | 2,747 FT ² | 255.20 M ² |
| Unit 206 | 2,762 FT ² | 256.60 M ² |
| Unit 209 | 2,188 FT ² | 203.30 M ² |
| Unit 210 | 1,844 FT ² | 171.30 M ² |





| | | |
|----------|-----------------------|-----------------------|
| Unit 301 | 1,323 FT ² | 122.90 M ² |
| Unit 302 | 2,729 FT ² | 253.50 M ² |
| Unit 303 | 2,464 FT ² | 228.90 M ² |
| Unit 304 | 2,324 FT ² | 215.90 M ² |
| Unit 305 | 2,743 FT ² | 254.80 M ² |
| Unit 306 | 2,768 FT ² | 257.20 M ² |
| Unit 309 | 2,198 FT ² | 204.20 M ² |
| Unit 310 | 1,874 FT ² | 174.10 M ² |





| | | |
|----------|-----------------------|-----------------------|
| Unit 401 | 1,339 FT ² | 124.40 M ² |
| Unit 402 | 2,756 FT ² | 256.00 M ² |
| Unit 403 | 2,547 FT ² | 236.60 M ² |
| Unit 404 | 2,536 FT ² | 235.60 M ² |
| Unit 405 | 2,775 FT ² | 257.80 M ² |
| Unit 406 | 2,826 FT ² | 262.50 M ² |
| Unit 409 | 2,223 FT ² | 206.50 M ² |
| Unit 410 | 1,834 FT ² | 170.40 M ² |





| | | |
|----------|-----------------------|-----------------------|
| Unit 501 | 1,287 FT ² | 119.60 M ² |
| Unit 502 | 2,799 FT ² | 260.00 M ² |
| Unit 503 | 2,576 FT ² | 239.30 M ² |
| Unit 504 | 1,312 FT ² | 121.90 M ² |
| Unit 505 | 2,798 FT ² | 259.90 M ² |
| Unit 506 | 2,837 FT ² | 263.60 M ² |
| Unit 509 | 2,224 FT ² | 206.60 M ² |
| Unit 510 | 1,965 FT ² | 182.60 M ² |



Riverside



Streetside

| | | |
|----------|-----------------------|-----------------------|
| Unit 601 | 2,193 FT ² | 203.80 M ² |
| Unit 602 | 3,237 FT ² | 300.70 M ² |
| Unit 603 | 2,617 FT ² | 243.10 M ² |
| Unit 604 | 2,723 FT ² | 253.00 M ² |
| Unit 605 | 3,339 FT ² | 310.20 M ² |
| Unit 606 | 3,271 FT ² | 303.90 M ² |
| Unit 607 | 2,636 FT ² | 244.90 M ² |
| Unit 608 | 2,787 FT ² | 258.90 M ² |



Riverside



Streetside

| | | |
|----------|-----------------------|-----------------------|
| Unit 601 | 2,193 FT ² | 203.80 M ² |
| Unit 602 | 3,237 FT ² | 300.70 M ² |
| Unit 603 | 2,617 FT ² | 243.10 M ² |
| Unit 604 | 2,723 FT ² | 253.00 M ² |
| Unit 605 | 3,339 FT ² | 310.20 M ² |
| Unit 606 | 3,271 FT ² | 303.90 M ² |
| Unit 607 | 2,636 FT ² | 244.90 M ² |
| Unit 608 | 2,787 FT ² | 258.90 M ² |





Joshua Miller
joshua.miller@colliers.com
+44 (0) 207 101 2020
+44 (0) 791 772 5365

Shaun Simons
shaun.simons@colliers.com
+44 (0) 207 101 2020
+44 (0) 778 842 3131

Sam Jacobs
sam.jacobs@colliers.com
+44 (0) 207 101 2020
+44 (0) 787 624 4520

**RICHARD
SUSSKIND**

Josh Perlmutter
josh@richardsuskind.com
+44 (0) 207 831 8311
+44 (0) 781 469 9096

Roni Rosenberg
roni@richardsuskind.com
+44 (0) 207 831 8311
+44 (0) 770 264 3317

Adam Noble
adam@richardsuskind.com
+44 (0) 207 831 8311
+44 (0) 798 099 1217

Address
Metropolitan Wharf
70 Wapping Wall
London E1W 3SS
United Kingdom

Landlord
UK REAL ESTATE LTD

Terms upon application.

UK Real Estate Ltd and its agents give notice that these particulars are set out as a general outline only for the guidance of intending Purchasers or Lessees and do not constitute any part of an offer or contract. Details are given without any responsibility and any intending Purchasers, Lessees or Third Party should not rely on them as statements or representations of fact, but must satisfy themselves by inspection or otherwise as to the correctness of each of them. No person in the employment of UK Real Estate Ltd and its agents has any authority to make any representation or warranty whatsoever in relation to this property.